

PF1 - PUMP, FAN, EARTH LEAKAGE AND EARTH CONTINUITY RELAY



What is the PF1?

The PF1 provides selectable control functionality for fan and pump installations while also providing earth leakage and earth continuity protection.

The selectable pump protection mode (anti-snore) detects low load events automatically managing the pump duty cycle and preventing potential damage to the pump.

The selectable fan protection mode (burp) prevents damage to the material of the ventilation tube during the initial stages of inflation.

The PF1 also features best practice earth continuity and earth leakage protection ensuring you operate the safest most effective electrical system.

What makes the PF1 your best choice?

Multi-functional protection in a single unit

Combining earth leakage and earth continuity protection with pump and fan control into a single multi-functional unit saves space and provides a significant cost saving when compared with individual solutions for each function.

Advanced pump control functionality

Ampcontrol is committed to best practice, the pump control functionality of the PF1 is no exception. It has many advantages over other pump control products including:

- The ability to be configured in manual or automatic mode, providing the freedom to operate the relay in a way which best suits the application. This includes the ability to let

FEATURES



Pump and fan control with earth leakage and earth continuity protection



Easy to use, set up and control



Ease of documentation with settings downloaded and reviewed via computer



Logging of a wide range of events provides effective avenues for trouble shooting and timely resolution of faults

the relay fully control the pump operations, or by using external devices to determine pump on and off times (eg float switches).

- Adaptive pump time allowing the pump operation to be varied automatically depending on the conditions in which the pump is operating. This variation in pump on and off times reduces the stress and potential damage on the pump motor that fixed on/off times may cause if conditions change.
- Straight forward current set point means there is no guessing of the required settings.
- Standardisation of installations and parts as a result of a single wide ranging current transformer.



1300 267 373

ampcontrolgroup.com



PF1 - PUMP, FAN, EARTH LEAKAGE AND EARTH CONTINUITY RELAY

Event logging

For effective trouble shooting and timely resolution of faults the PF1 logs a wide range of events including changes to settings, tripping of protection functions and changes in relay status. The PF1 can be connected to a computer to view the event logs stored in the device.

Ease of use, set up and control

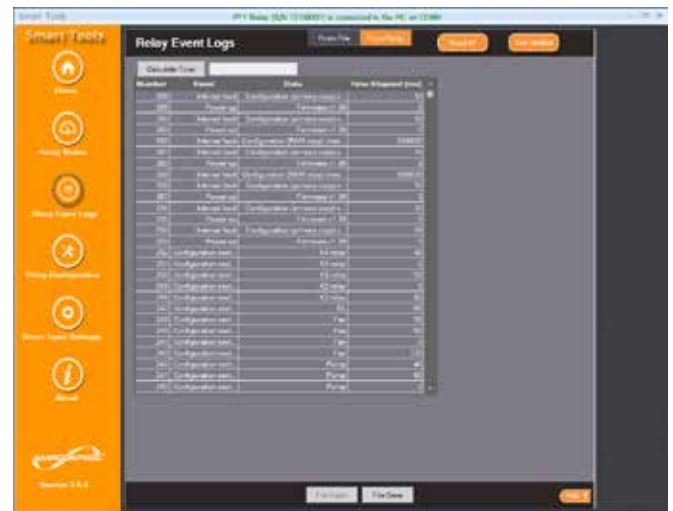
Included with the PF1 is a comprehensive interface which is intuitive and easy to use. It provides the user with access to the status of the relay and the ability to easily change settings and control the functionality of the device. A comprehensive help menu ensures that the user has all the tools required to easily operate the relay.

Smart tools software

Improving user functionality and experience through software platforms.



Smart tools software access



Event logs



Current and saved status



Relay configuration

